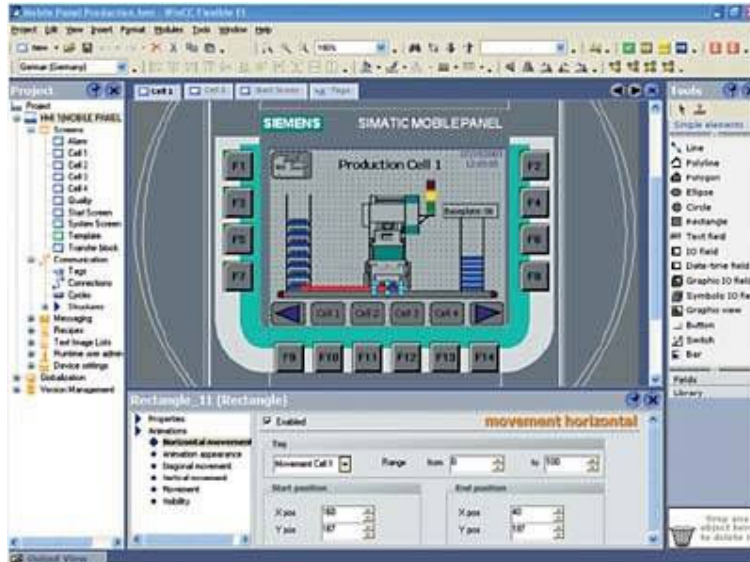


# HMI software - SIMATIC WinCC flexible engineering software



## Overview

Uniform family of engineering tools for configuring SIMATIC HMI Operator Panels, the operator control part of SIMATIC C7 units, SIMOTION/SINUMERIK Panel PCs as well as the PC-based visualization software WinCC flexible Runtime

- Executable under Windows 2000/XP Professional
- Current version:
  - SIMATIC WinCC flexible 2007 Advanced
  - SIMATIC WinCC flexible 2007 Standard
  - SIMATIC WinCC flexible 2007 Compact
  - SIMATIC WinCC flexible 2007 Micro

Various target systems can be configured depending on the selected product:

- WinCC flexible Micro
  - Micro Panels: OP 73micro, TP 170micro, TP 177micro
- WinCC flexible Compact
  - Micro Panels: OP 73micro, TP 170micro, TP 177micro
  - Mobile Panels: Mobile Panel 170, Mobile Panel 177
  - 70 Series Panels: OP 73, OP 77A, OP 77B

- 170 Series Panels: TP 170A, TP 177A, TP 170B, TP 177B, OP 170B, OP 177B
  - C7 devices: C7-635 (Touch/Key)
  - WinCC flexible Standard
    - Micro Panels: OP 73micro, TP 170micro, TP 177micro
    - Mobile Panels: Mobile Panel 170, Mobile Panel 177, Mobile Panel 277
    - 70 Series Panels: OP 73, OP 77A, OP 77B
    - 170 Series Panels: TP 170A, TP 177A, TP 170B, TP 177B, OP 170B, OP 177B,
    - 270 Series Panels: TP 270, TP 277, OP 270, OP 277
    - 270 Series Multi Panels: MP 270B, MP 277
    - 370 Series Multi Panels: MP 370, MP 377
    - C7 devices: C7-635 (Touch/Key), C7-636 (Touch/Key)
  - WinCC flexible Advanced
    - Micro Panels: OP 73micro, TP 170micro, TP 177micro
    - Mobile Panels: Mobile Panel 170, Mobile Panel 177, Mobile Panel 277
    - 70 Series Panels: OP 73, OP 77A, OP 77B
    - 170 Series Panels: TP 170A, TP 177A, TP 170B, TP 177B, OP 170B, OP 177B,
    - 270 Series Panels: TP 270, TP 277, OP 270, OP 277
    - 270 Series Multi Panels: MP 270B, MP 277
    - 370 Series Multi Panels: MP 370, MP 377
    - C7 devices: C7-635 (Touch/Key), C7-636 (Touch/Key)
    - Standard PC
- SIMATIC Panel PC: Panel PC IL 70, Panel PC IL 77, Panel PC 477/477B, Panel PC 577, Panel PC 670/677B, Panel PC 677, Panel PC 870, Panel PC 877
- SIMOTION Panel PC: P012K, P012T, P015K, P015T, PCR, PCR-Touch
- SINUMERIK Panel PC: HT8, OP08T, OP010, OP012, TP012, OP015, TP015, OP015A

## Options

### **SIMATIC WinCC flexible/ChangeControl**

WinCC flexible/ChangeControl enables consistent backup of configuration data. Delivered customer projects, approved reference states or development stages are managed in a database. Changes to project data can be integrated without problem into the version management using new versions. A rollback is possible at any time.

The history of changes can be verified down to the last detail for applications requiring interruption-free proof for the complete life cycle of a product. Comparisons between configuration data permit recognition of differences between project versions.