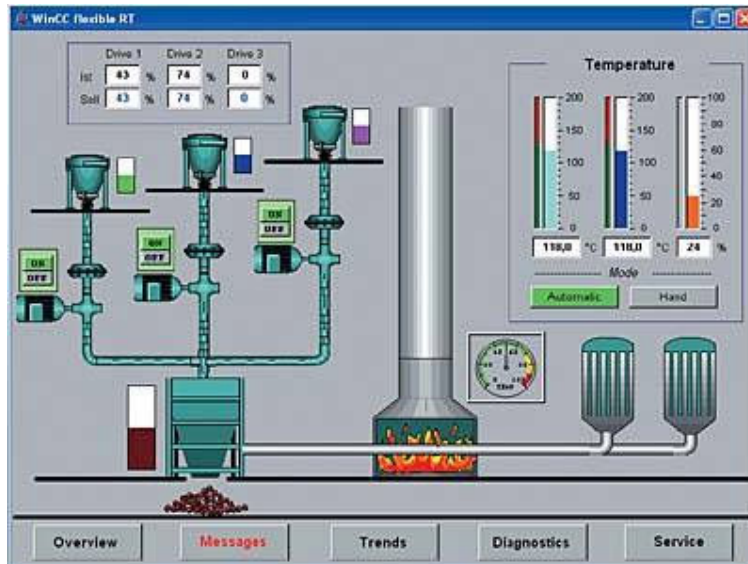


SIMATIC WinCC flexible runtime software - SIMATIC WinCC flexible RT



Overview

- **PC-based visualization software** for single-user systems directly at the machine
- Executable under Windows 2000/XP Professional **Current version:**
 - SIMATIC WinCC flexible 2007 Runtime with 128, 512 or 2048 PowerTags
- SIMATIC WinCC flexible Runtime is configured with SIMATIC WinCC flexible Advanced engineering software.

Benefits

- Optimum price/performance ratio thanks to individually scalable system functionality
- Functions for all visualization tasks:
Operator functions, graphical and trend displays, signaling system, log system, archiving (option), recipe management (option), Audit Trail (option), process fault diagnostics (option)
- Flexible runtime functionality thanks to Visual Basic scripts
- Innovative service concepts with remote operation, diagnostics and administration via intranet and Internet as well as e-mail communication to increase availability (option)
- Support for simple distributed automation solutions based on TCP/IP networks at the machine level (option)

Application

SIMATIC WinCC flexible Runtime is the high-performance visualization software for simple visualization tasks at machine level. It can be used as a single-user solution for all automation applications in manufacturing automation, process automation and building services automation.

SIMATIC WinCC flexible Runtime can be used in combination with the following operator panels:

- SIMATIC Panel PCs
 - Microbox 420
 - Panel PC 477
 - Panel PC 577
 - Panel PC 677
 - Panel PC 877
- SIMOTION Panel PCs
 - PCR, PCR-Touch
- SINUMERIK Panel PCs
 - OP010, OP012, OP015
 - TP012, TP015, OP015A
- Standard PCs with resolutions (W x H in pixels) of:
 - 640 x 480, 800 x 600, 1024 x 768, 1280 x 1024, 1600 x 1200