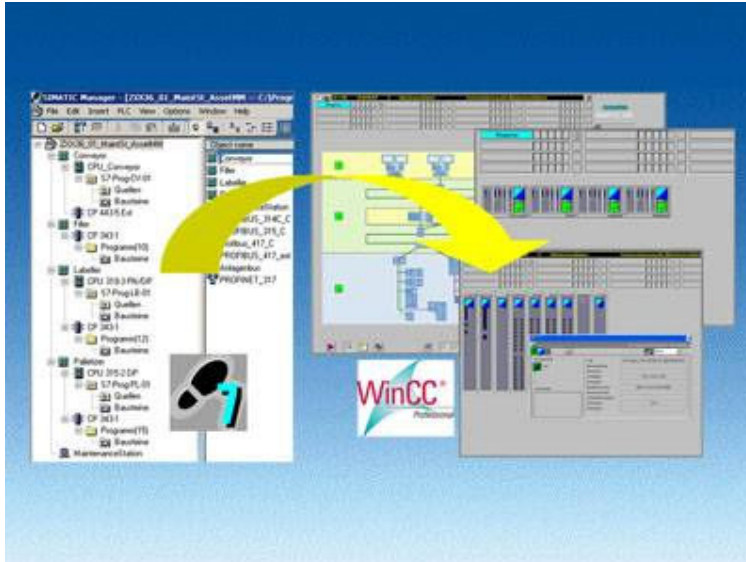


# Software for SIMATIC S7/C7/WinAC - SIMATIC Maintenance Station



## Overview

### System-integrated plant asset management system

- Automatic generation of a maintenance view in WinCC from the STEP 7 hardware configuration
- Plant-wide visualization of all automation components from the management level to the field level in ready linked, hierarchically arranged WinCC displays
- Display of central and distributed SIMATIC S7 components, PROFIBUS and PROFINET networks as well as associated bus nodes
- Ethernet network components and industrial PCs can be integrated through SIMATIC NET SNMP OPC Server
- Display of device status with group status generation in overview and detail displays
- The device statuses "Maintenance required" and "Maintenance request" are supported for status-based maintenance
- Provision of uniform faceplates showing detailed information for all components displayed
- Display of the device identification data (electronic rating plate)
- Submission of maintenance requests directly from WinCC
- Integrated display of the status of the request

## Benefits

- Reducing down times:
  - problems in the plant are detected sooner due to the uniform presentation and clear overview of all information that is important for maintenance.
- Avoiding downtimes:
  - support of condition-based maintenance.
- Reduced maintenance costs:
  - optimization of the flow of information between production and maintenance by submitting maintenance requests and presenting the status of requests.
- Transparency and traceability:
  - all procedures are based on messages and can therefore be archived and traced.
  - a comprehensive database is generated that can be analyzed with WinCC functions or external tools.
- Scalability:
  - support of WinCC single-user stations and client/server configurations.
  - the SIMATIC Maintenance Station can be added to an existing WinCC project.
- Consistency:
  - The maintenance view is generated from the control project and is consistent with it.
- Flexibility in selection of devices:
  - use of the PROFIBUS and PROFINET standards for device interfacing.
  - an additional proxy concept allows devices to be displayed that are not included in the STEP 7 hardware configuration or that do not support the standard diagnostics of PROFIBUS/PROFINET.